

AI for Good Global Summit 2026

JAPAN 
Pavilion Guide



Ministry of Internal Affairs
and Communications, JAPAN

Download the brochure data
from the QR code.



Welcome to the Japan Pavilion

About Us

Ministry of Internal Affairs and Communications (MIC)

Artificial Intelligence (AI) is transforming the foundations of society—such as infrastructure, education, healthcare, and communication—at the frontlines of social challenges worldwide, while also raising new challenges in its implementation and sustainable use.

Established by ITU in 2017, AI for Good (AI4G) has evolved into an international multi-stakeholder platform for sharing cutting-edge approaches to solving social and global challenges with AI. The Government of Japan actively supports AI4G to encourage industry engagement and to connect international standards with social implementation.

At the AI for Good Global Summit 2026, the Ministry of Internal Affairs and Communications of Japan supports the Japan Pavilion and invites innovative AI startups at the forefront of practical deployment. The Pavilion showcases initiatives that advance Universal and Meaningful Connectivity through the use of AI. We invite you to experience firsthand how AI is transforming society through these practical innovations.

Contact

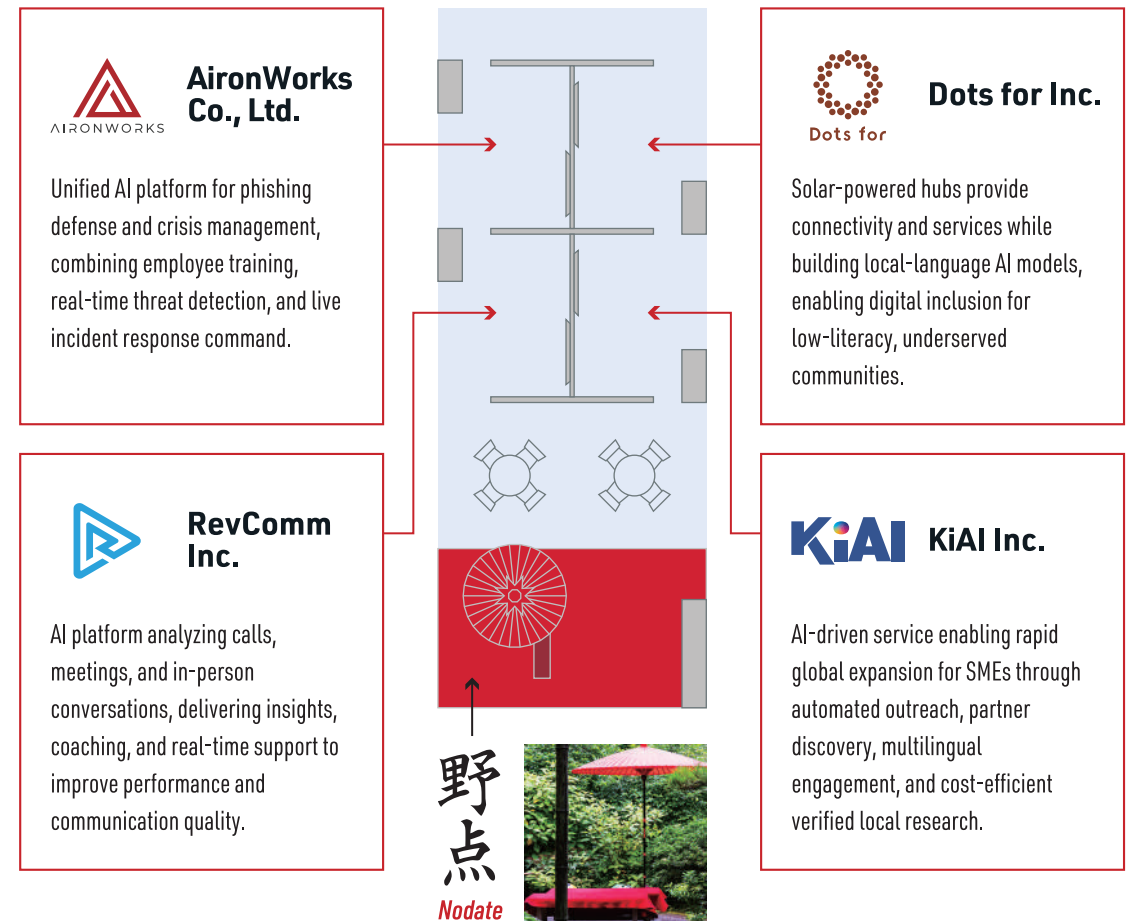
Japan Pavilion Administration Office
Mail : ai4g2026-sec@ituaj.jp



Ministry of Internal Affairs
and Communications, JAPAN



Exhibitor Map



Booth Location:
Hall 2 / Booth Number 225



AironWorks Co., Ltd.

Company Introduction

<https://en.ironworks.com/>



info@ironworks.com

+81-3-6822-2354

5-2-33 Akasaka, Minato-ku,
Tokyo 107-0052, Japan

Cybersecurity stops attacks. Cyber Resilience keeps you standing. AiR – AI for Resilience, Cyber and Human

AiR is an Agentic AI platform that anticipates threats, trains your people, and commands your response – keeping the organization standing even when attacks reach the inside.

Built by world-class white-hat hackers and AI engineers from Israel's elite Unit 8200 and Japan's leading enterprises.

–Key Facts –

- Founded: August 2021
- HQ: Tokyo, Japan | R&D: Tel Aviv, Israel
- Founders: Ani Terada (CEO) | Gonen Krak (CTO, ex-Unit 8200)
- Mission: Enhancing Teams with AI
- Investors: Salesforce Ventures, The Garage, Rakuten Capital, SBI Investment, ALL STAR SAAS FUND
- Customers: 1,300+ across 20+ countries – global enterprises in finance, manufacturing, consumer goods, and more

Products Details

A unified Agentic AI platform – one to defend, one to command.

AiR Cyber – Train your humans. Hunt your threats. Continuously, by AI.

Protects people and systems from phishing, BEC, and social engineering across email, SMS, SNS, and chat.

- AiR HRM: AI-generated, hyper-realistic phishing simulations personalized per employee
- AiR Email Security: Real-time AI risk scoring, native to Microsoft 365 and Google Workspace
- Fully automated end-to-end – proven to lift phishing-detection awareness by 80%+

AiR Commander – When crisis hits, no one reads a PDF. Turns your incident response plan into a live, AI-driven command center – with AI-assisted playbooks, real-time situational awareness, and automated stakeholder communications.



Dots for

Dots for Inc.

Company Introduction

<https://dotsfor.com/>

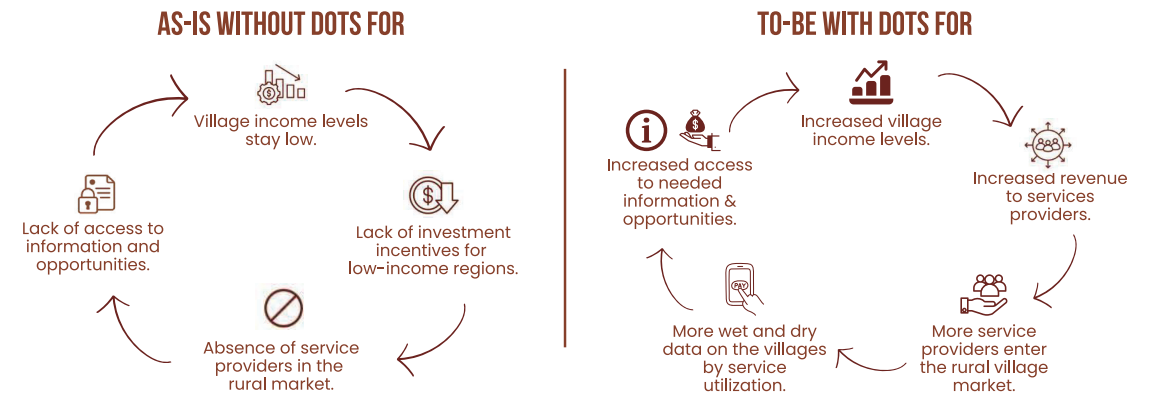


info@dotsfor.com

5F, Daiichi Kangyo Shinyo Kumiai
Akihabara Building,
3-6-4 Soto Kanda, Chiyoda-ku,
Tokyo 101-0021, Japan

Bridging gaps of rural Africa through digitalization and AI

There are disadvantages that people have to tolerate by living in rural areas. Dots for exists to eliminate such disadvantages and build a world where everyone can choose where to live without feeling inconvenience.



Products Details

[Solving the Connectivity Desert]

Expanding connectivity via our solar-powered Digital Hubs, providing Wi-Fi and essential digital services (vocational videos, BNPL financing, etc) to underserved communities.



[Solving the Illiteracy & Language Barriers]

Collecting low-resource local languages audio data through our Digital Hub in villages

↓
Turning such low-resource local language data into precious Large Language Model (LLM)

↓
Unlocking language capability for all village residents, regardless of literacy or language barriers






KiAI Inc.

Company Introduction

 <https://ki.ai/bz/>



 info@ki.ai/bz

 +81-3-6823-4399

 2-20-1 Nishinarisawa-cho,
Hitachi-shi, Ibaraki 316-0032, Japan

As AI becomes core infrastructure for economies and industries, KiAI builds the systems that enable resilience, trust, and real-world verification at scale. The university-born AI startup is led by CEO Kazumasa Oba – former economist at the IFC, OECD, and ILO – and CAIO Prof. Hiroyuki Shinnou, a 30-year leader in AI research. The company is recognized by government programs and global accelerators.

Through a strategic alliance with IACE Travel (TSE-listed), KiAI integrates advanced AI with on-the-ground local networks, delivering high-trust business intelligence that mitigates concentration risk and strengthens global supply-chain resilience.

Products Details

Trsr

AI powered infrastructure for the global expansion of manufacturing SMEs.

As AI agents become deeply embedded in cross border operations, Trsr provides a resilient, verifiable operational layer – identifying partners, validating markets, and driving multilingual outreach with 20-30x efficiency over traditional methods.

Local due diligence is executed through IACE Travel's on site operators, preventing correlated failures and reducing risk and cost dramatically.




RevComm Inc.


Company Introduction

 <https://www.revcomm.com/en/>



 info@revcomm.co.jp

 +81-3-4405-4621

 28F, Marunouchi Building,
2-4-1 Marunouchi, Chiyoda-ku,
Tokyo 100-6328, Japan

RevComm Inc. is one of the fastest growing AI startups in Asia. Our mission is to reinvent communication to create a society where people think of others.

Our expertise lies in AI, Voice, and Cloud Software. We provide a revenue intelligence tool powered by Self-Coaching Voice AI called MiiTel.



Products Details

MiiTel is an AI-powered voice analytics tool that optimizes all conversations, whether by phone, web conference, or face-to-face. It can be widely used, from eliminating black boxes to leveraging conversation data.

MiiTel Phone: MiiTel Phone analyzes and optimizes calls in inside sales and telephone sales using AI. Based on the analysis results, an AI coach provides specific improvement proposals, enabling self-coaching.

MiiTel Meetings: MiiTel Meetings analyzes and optimizes all online meetings, such as business negotiations and internal meetings, using AI. It aggregates vast amounts of meeting data, providing users with unique insights that are specific to remote settings, enabling self-coaching.

MiiTel RecPod: MiiTel RecPod optimizes offline (face-to-face) communication, such as in-person sales and counter services, with AI. It enables self-coaching to maximize the effectiveness of time- and labor-intensive face-to-face communication.

MiiTel Call Center: MiiTel Call Center optimizes call center calls with AI. Features such as real-time FAQs and alerts for complaint occurrences not only enable self-coaching for agents but also provide powerful support for supervisors.

